

Try REPROCELL's StemEdit™ hypoimmune iPSC lines for research today — and when you're ready, we'll create the corresponding clinical-grade lines to advance your cell therapy program.

## Available Product Lines

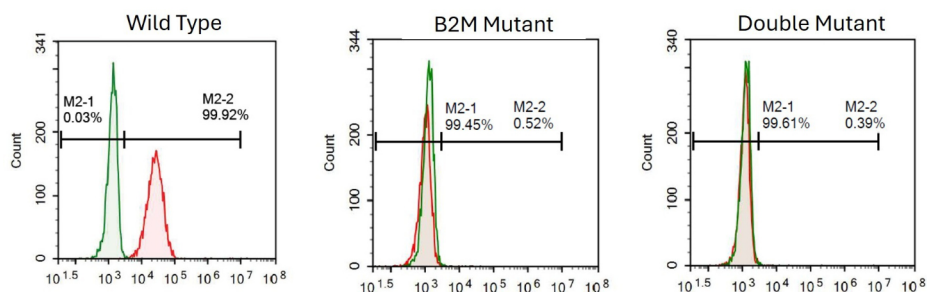
- **HLA Class I Knockout**  
StemEdit™ Human iPSC non-HLA Class I (B2M Homo KO)
- **HLA Class I/II Double Knockout**  
StemEdit™ Human iPSC non-HLA Class I/II (B2M/CIITA Homo Double KO)

Our high-quality HLA knockout iPSC lines are generated using REPROCELL's proprietary genome editing nuclease system, built on the trusted foundation of StemRNA™ reprogramming technology.

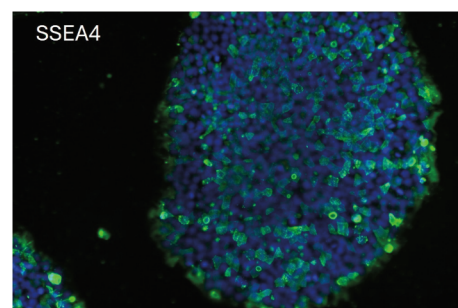
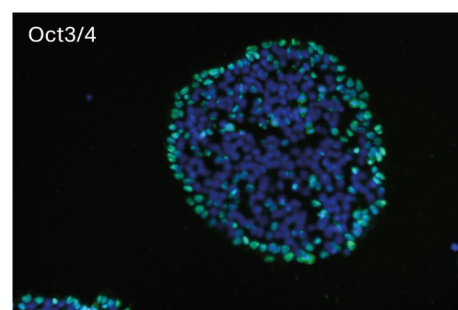
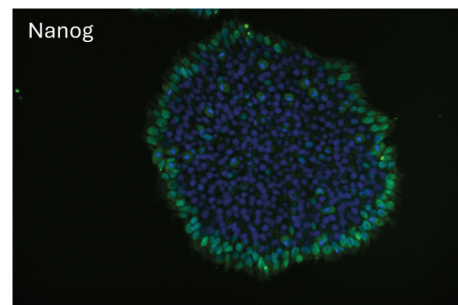
These lines offer:

- **Reliable performance** – easy culture in NutriStem® hPSC XF Medium (Cat. No. 01-0005) on iMatrix-511 (Cat. No. NP892-011)
- **Clean reprogramming** – no retained reprogramming vectors
- **Clinical grade origin** – derived from one of REPROCELL's StemRNA™ clinical-grade iPSC lines

StemEdit™ HLA Knockout iPSCs provide researchers with cost-effective access to advanced engineered iPSCs – eliminating the time and expense of developing hypoimmune lines in-house.



Analysis of HLA Class I expression. HLA Class I expression (Red Curve) is measured by flow cytometry. Both the B2M Mutant (middle) and the Double Mutant (right) show strong suppression of HLA Class I expression compared to the Wild Type cells (left).



StemEdit Human iPSC non-HLA class 1/2 (B2M/CIITA Homo double KO) cells were cultured in NutriStem hPSC XF Medium(01-0005) on iMatrix-511 (NP892-011) and stained with pluripotency markers. Robust expression of Nanog, Oct3/4, and SSEA4 confirmed pluripotency.

## Products

REPROCELL Cat. No.	Description	Supplier Cat. No.	Size
VCT-37-F35 B2M KO	StemEdit Human iPSC non-HLA class 1 (B2M Homo KO)	–	1 vial
VCT-37-F35 B2M CIITA	StemEdit™ Human iPSC non-HLA class 1/2 (B2M/CIITA Homo double KO)	–	1 vial
01-0005	NutriStem hPSC XF Culture Medium	Sartorius 05-100-1A	500 mL
NP892-011	iMatrix-511 Recombinant Human Laminin-511	Matrixome 892-011	350 µL

The StemRNA parent line is also available as research or clinical version. Please inquire: [info-us@reprocell.com](mailto:info-us@reprocell.com)

<https://www.reprocell.com/product-catalog/stemedit-gene-edited-ipscs>

