

Take your cell culture beyond the limitations of the monolayer

3D cell cultures using REPROCELL's Alvetex technology deliver more *in vivo*-like results over traditional two-dimensional monolayer cultures.

Alvetex allows cell biologists to maintain the integrity of cell structure and organization found within native tissue to better understand cellular biology.

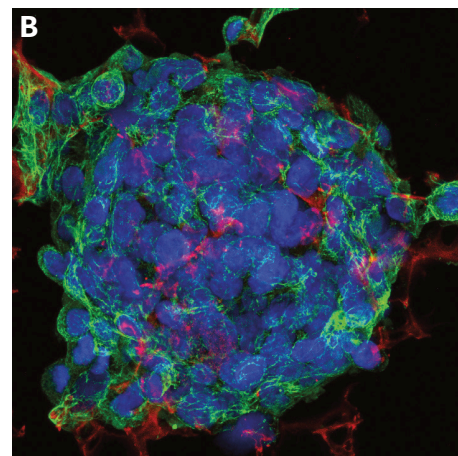
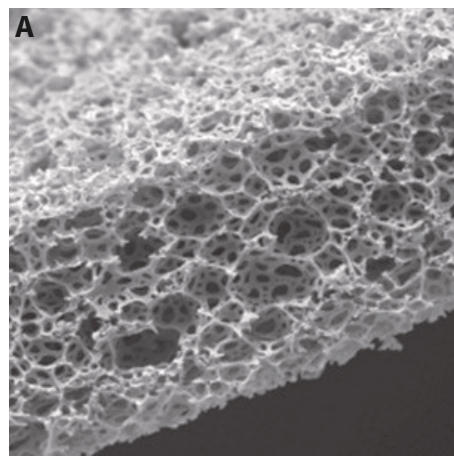
Easy transition from 2D to 3D cell culture

All Alvetex products are made from the same inert polystyrene material as standard 2D cell culture plasticware. Cell biologists can quickly experience the many benefits of 3D cell culture and at the same time easily switch between 2D and 3D experiments.

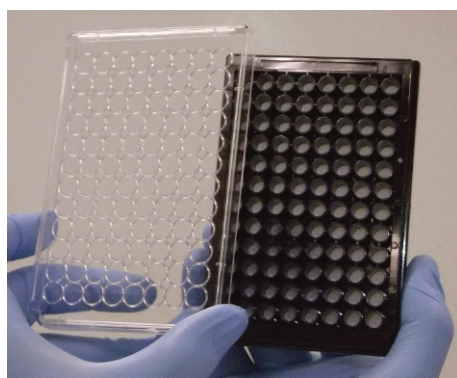
Benefits of Alvetex 3D cell culture systems

- Build more predictive biological models by maintaining the natural cellular structure and function
- Better understand how cells behave in complex systems with 3D co-culture models
- Enhance primary cell viability and longevity
- Simple imaging and RNA/protein isolation
- Add in perfusion of 3D cells for an extra step closer to *in vivo* conditions

Right: Alvetex Scaffold 12 well insert (AVP005) showing cell seeding via a micropipette.



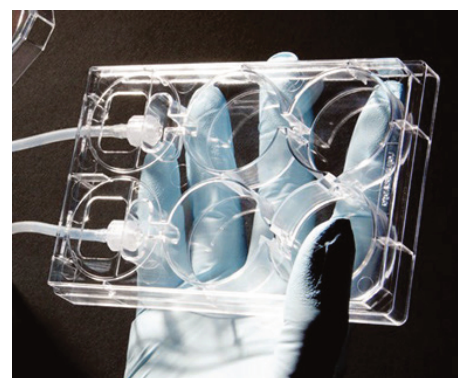
Above: (A.) Alvetex Scaffold as viewed by scanning electron microscope: a polystyrene membrane with > 90 % porosity. (B.) Triple fluorescent staining of HepG2 cells grown in 3D on Alvetex Scaffold.



Alvetex Scaffold in 96 well plate format.
Also available: 12 well and 24 well plate formats.



Alvetex Scaffold 12 well insert format.
Also available: 6 well and 24 well formats.



Alvetex Perfusion Plate.

<https://www.reprocell.com/product-catalog/featured/alvetex-3d-cell-culture-systems>



Alvetex membrane formats

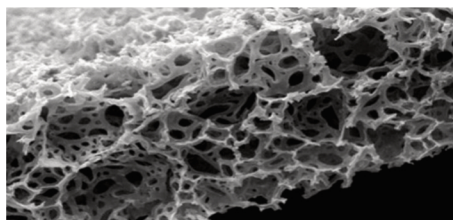
The Alvetex membrane is currently available in two types: **Alvetex Scaffold** and **Alvetex Strata**. Both materials are presented as 200 µm thick membranes of highly porous cross-linked polystyrene. The difference is in their fine structure and architecture.

Multiple plasticware formats for a wide range of assays

Available in a wide range of plate and well insert formats supporting a broad range of cell and tissue type environments for cells to penetrate, grow and proliferate in 3D.

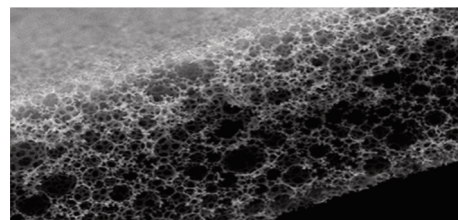
Alvetex Scaffold

Primarily designed for three dimensional culture of dissociated mammalian cells within the scaffold, forming three dimensional associations as they propagate and migrate.

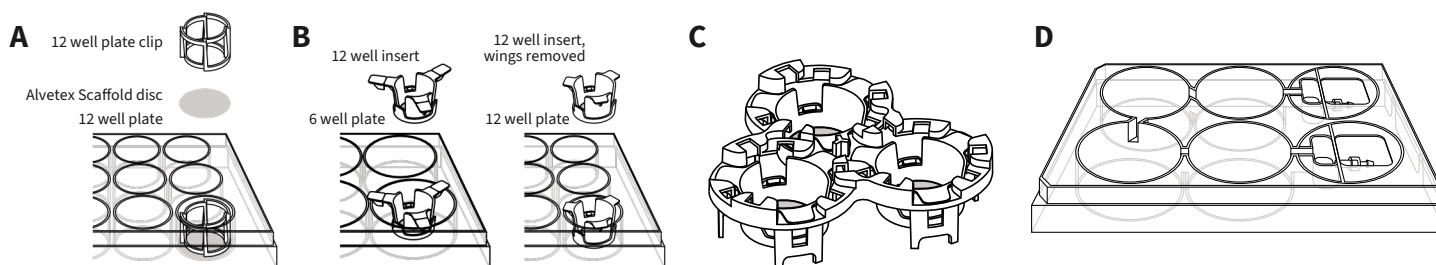


Alvetex Strata

Primarily designed to support the growth of cells and intact tissues on the surface of the membrane.



Above: Scanning electron microscope images of Alvetex Scaffold and Alvetex Strata, to highlight their porous structure. **Left:** cross-section of an Alvetex Scaffold disc. Thickness: 200 µm. Voids: ~45 µm. Interconnects: ~15 µm. **Right:** cross-section of 200 µm thick Alvetex Strata disc. Thickness: 200 µm. Voids: ~15 µm. Interconnects: ~3 µm.



Above: (A.) Alvetex Scaffold 12 well plate (AVP004). (B.) Alvetex Scaffold 12 well inserts (AVP005) and Alvetex Strata 12 well inserts (STP005) can fit 6 well plates or 12 well plates. (C.) Well insert holder for deep Petri dish (AVP015). (D.) Alvetex Perfusion PLaye (AVP011),

Products

Product Name	Product Code	Pack Sizes
Alvetex Scaffold multi-well plate formats		
12 well plate	AVP002	2, 10, or 80 plates
24 well plate	AVP006	2, 10, or 80 plates
96 well plate	AVP009	2, 10, or 80 plates
Alvetex Scaffold well insert formats		
6 well insert	AVP004	12, 48, or 96 inserts
12 well insert	AVP005	12, 48, or 96 inserts
24 well insert	AVP012	12, 48, or 96 inserts
Alvetex Tools		
Well insert holder and deep Petri dish	AVP015	2 or 10 units
Perfusion plates with Luer locks	AVP011	2 or 10 units

Note: All products are individually sterile blister packed.

Discover more: The Science of Alvetex

<https://www.reprocell.com/alvetex/the-science-of-alvetex>



Product Name	Product Code	Pack Sizes
Alvetex Kits		
Alvetex Scaffold Plate Starter Kit 1 × 12 well plate / 1 × 24 well plate / 1 × 96 well plate	AVP-KIT-1	1 kit
Alvetex Scaffold Well Insert Starter Kit 6 × 6 well inserts / 6 × 12 well inserts / 1 × well insert holder and deep Petri dish	AVP-KIT-2	1 kit
Alvetex Strata Well Insert Starter Kit 6 × 6 well inserts / 6 × 12 well inserts / 1 × well insert holder and deep Petri dish	STP-KIT-2	1 kit
Perfusion Plate Kit with Alvetex Scaffold 6 well inserts 2 × Perfusion Plates / 12 × Alvetex Scaffold 6 well inserts	AVP-KIT-3	1 kit
Perfusion Plate Kit with Alvetex Scaffold 12 well inserts 2 × Perfusion Plates / 12 × Alvetex Scaffold 12 well inserts	AVP-KIT-4	1 kit
Perfusion Plate Kit with Alvetex Scaffold 6 well inserts 5 × Perfusion Plates / 48 × Alvetex Scaffold 6 well inserts	AVP-KIT-5	1 kit
Perfusion Plate Kit with Alvetex Scaffold 12 well inserts 5 × Perfusion Plates / 48 × Alvetex Scaffold 12 well inserts	AVP-KIT-6	1 kit



REPROCELL BRANDS

