

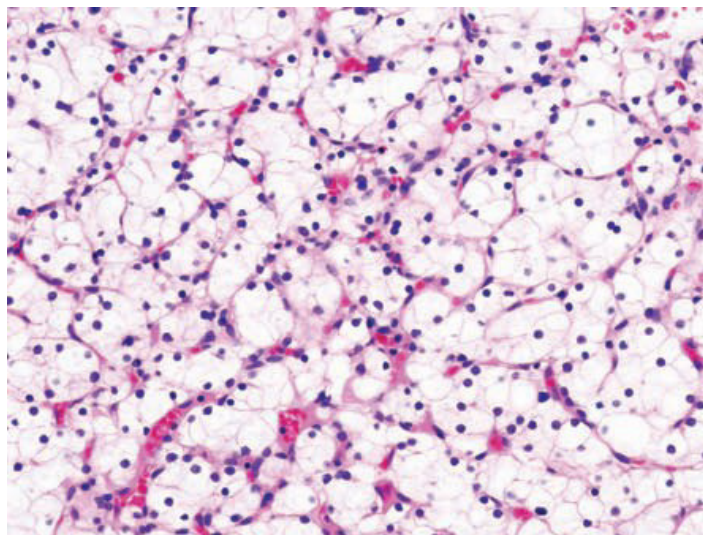
# BioServe™ Global Biorepository

Human Tissue and Blood Bank



## Overview

REPROCELL's BioServe Global Repository is the world's largest commercial human tissue bank, providing researchers with access to over 600,000 DNA, RNA, human tissue and serum samples derived from over 120,000 patients collected from four continents. BioServe human tissue samples are consistently handled according to validated protocols established by the FDA/NCI guidelines for biomarker research. All samples are fully consented for broad genomic and proteomic use and are ethically collected according to HIPAA regulations and IRB approved protocols.



Renal Cell Carcinoma

## Patient Recruitment

- Patients are recruited under IRB approved protocols and broadly consented for genomic and proteomic research
- Extensive case report forms with specific inclusion exclusion criteria insuring accurate disease state collections
- Ongoing collection of personal physician confirmed normal controls

## Sample Handling and Storage

- Tissue is snap frozen to preserve RNA and protein integrity
- Serum kept at  $-80^{\circ}\text{C}$  with no freeze/thaw cycles
- Collection sites trained to adhere to strict collection and processing SOPs

## Clinical Data Management

- All demographic, clinical and pathological data maintained in a readily searchable database
- Sample data are de-identified and de-linked from the original patient consent
- Client defined sample sets based on specific patient information

## Summary

- Over 25 years experience in providing researchers world class biomaterials and data
- Customers for biomaterial include many major pharmaceutical and biotech companies
- Rapid turnaround time on banked and prospective samples
- Custom collection design services
- Samples processed in a CLIA environment



REPROCELL's CLIA Certified Lab

[reprocell.com](http://reprocell.com)

For research use only. Not for use in diagnostic or therapeutic procedures. Unless otherwise noted, REPROCELL, Inc. and REPROCELL, Inc. logo, and all other trademarks are the property of REPROCELL Inc. © 2018 REPROCELL, Inc. All rights reserved.



## BioServe Global Biorepository Blood Based Collections

Asthma	Diabetes	Neurological Diseases
Cancer (post-treatment)	End-Stage Renal Disease	Obesity
Cancer (pre-treatment)	Hypertension	Osteoarthritis
Clinically-confirmed Normal	Lipid Disorder	Osteoporosis
Controls	Lupus	Psoriasis
Congestive Heart Failure	Metastatic Cancer	Rheumatoid Arthritis
COPD	Multiple Sclerosis	Stroke
Coronary Artery Disease		

## BioServe Fresh Frozen and FFPE Tissue Types

Adipose	Intestine	Penis	Submandibular Gland
Adrenal	Kidney	Peritoneum	Synovium
Aorta	Larynx	Pharynx	Testis
Artery	Lip	Pituitary	Thymus
Bladder	Liver	Prostate	Thyroid
Blood	Lung	Rectum	Tongue
Bone	Lymph Node	Salivary Gland	Tonsil
Brain	Mouth	Serum	Ureter
Breast	Muscle	Skeletal Muscle	Urethra
Cartilage	Nerve	Skin	Uterus
Cervix	Omentum	Small Intestine	Vagina
Colon	Ovary	Smooth Muscle	Vein
Esophagus	Pancreas	Soft Tissue	Vulva
Fallopian Tube	Parathyroid	Spleen	
Gall Bladder	Parotid	Stomach	

### We have it...



BioServe has one of the largest commercial human tissue banks in the world. With more than 600,000 human samples, there is a good chance that our BioRepository already has what you need.

### Our network has it...



Through the BioServe Network, we are partnered with many other leading biorepositories. This expands our ability to source material and ensures that we can acquire the samples you need.

### Or, we can collect it



With BioServe's orphan disease network, rare human tissue samples are finally within reach. Through our Prospective Collections, we have custom procurement partnerships with specialty clinics all around the USA.

For research use only. Not for use in diagnostic or therapeutic procedures. Company names, company logos and trademarks for REPROCELL, BioServe, Stemgent, Reinnervate, and Biopta are all the property of REPROCELL Inc. © 2019 REPROCELL, Inc. All rights reserved.

#### REPROCELL Europe Ltd

Thomson Pavillion, Todd Campus  
West of Scotland Science Park  
Acre Road  
Glasgow, G20 0XA  
UK

T: +44 (0)141 465 3460  
E: info-emea@reprocell.com

#### REPROCELL USA Inc

9000 Virginia Manor Road  
Suite 207  
Beltsville, MD 20705  
USA

T: (301) 470 3362  
E: info-us@reprocell.com

#### REPROCELL India Ltd

3-1-135/1A, CNR Complex  
Mallapur  
Hyderabad 500 076  
Telangana  
India

T: +91-40-27178178  
E: Bhargavi.Gurram@reprocell.com

#### REPROCELL Inc (Japan)

MetLife Shin-yokohama 381, Bldg. 9F  
3-8-11, Shin-yokohama  
Kohoku-ku, Yokohama  
Kanagawa 222-0033  
Japan

T: +81 45 475 3887  
E: info-asia@reprocell.com