



Matrigel® Coating of Alvetex® Scaffold

Introduction

The following protocol outlines how to coat Alvetex Scaffold membranes with Matrigel to facilitate and enhance attachment and differentiation of both normal and transformed anchorage dependent cells. Example data shown herein was obtained using this protocol to grow HepG2 hepatocytes in Alvetex Scaffold for 7 days in 6-well inserts (AVP004-3) in 6-well plate format.

Method

1. Prepare Alvetex Scaffold for coating by first treating with 70% ethanol followed by two PBS washes as described in the relevant product information leaflet. Leave Alvetex Scaffold in the second PBS wash until ready to apply the Matrigel solution.
2. Dilute Matrigel (BD Biosciences, 356234); pre-thawed overnight on ice) to a concentration of 0.8 mg/ml (1 in 10 dilution) using appropriate cell culture media (e.g. MEM for the example below). Handle the reagents on ice, using pre-chilled pipette tips to perform the dilution and subsequent application onto Alvetex Scaffold.
3. Aspirate the second PBS wash from Alvetex Scaffold disc and carefully pipette 350 μ l of the diluted Matrigel™ solution onto each disc. Replace plate lids and leave to stand for 1-2 hours at room temperature.
4. Remove excess fluid from Alvetex Scaffold in well insert format by gently tapping the plate or Petri dish on the worktop. Check that no residual fluid is hanging from the base of the well inserts. Aspirate to remove any residual coating agent from the bottom of the wells. If using Alvetex Scaffold in 12-well plate format, tilt the plate and gently aspirate any excess fluid from the edge of the wells.
5. Prepare cells for seeding in the appropriate culture media and seed directly on the wet Matrigel™ coated Alvetex Scaffold membrane in the volumes relevant to the Alvetex Scaffold product format. Allow the cells to settle for 30-90 minutes in an incubator (5 % CO₂, 37 °C) before flooding with media.

Example: Growth of HepG2 Hepatocyte Cell Line in Matrigel™ Coated Alvetex Scaffold

Cell Culture details

HepG2 cells (ATCC, HB-8065) were routinely maintained in T-75 flasks. HepG2 complete media consisted of: MEM media (Gibco, 21090) supplemented with 10 % v/v FBS, 2 mM L-glutamine and 100 U/ml Penicillin/Streptomycin. Alvetex Scaffold 6-well inserts (AVP004-3) in 6-well plates, were coated with Matrigel as described above.

Cells were seeded at a density of 1×10^6 cells in 150 μ l media suspension per disc and were left to settle for 60 minutes in an incubator (5 % CO₂, 37 °C). Media was carefully added to each sample well (9 ml per well). Cultures were maintained for 7 days, with media changed on days 3 and 5.

Results

Pre-coating of Alvetex Scaffold discs with Matrigel resulted in enhanced infiltration of cells into the scaffold compared with control cultures in untreated Alvetex Scaffold. Cells were seen to

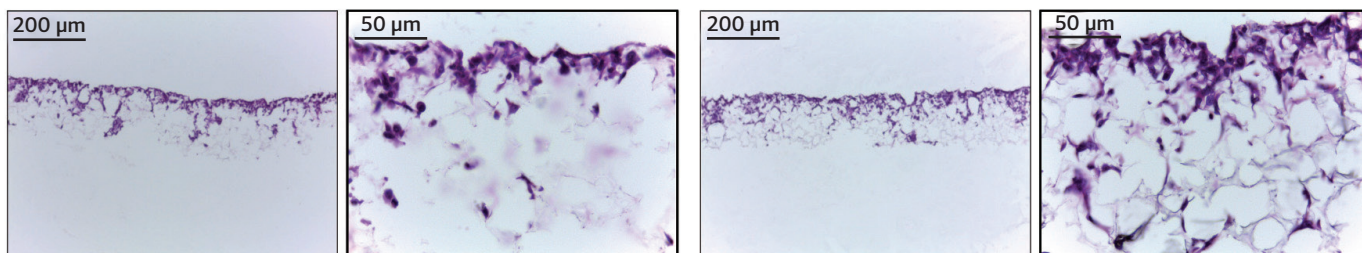
Matrigel® Coating of Alvetex® Scaffold



occupy the entire depth of the scaffold after 7 days of growth in Matrigel-coated discs, while cells grown in untreated Alvetex Scaffold occupied only the upper half of the scaffold. These findings indicate that pre-treatment of Alvetex Scaffold with extracellular matrix products is able to enhance the growth of appropriate cell types into the 3D structure.

Uncoated Alvetex Scaffold control

3 day 7 Day



Matrigel-coated Alvetex Scaffold

3 day 7 Day

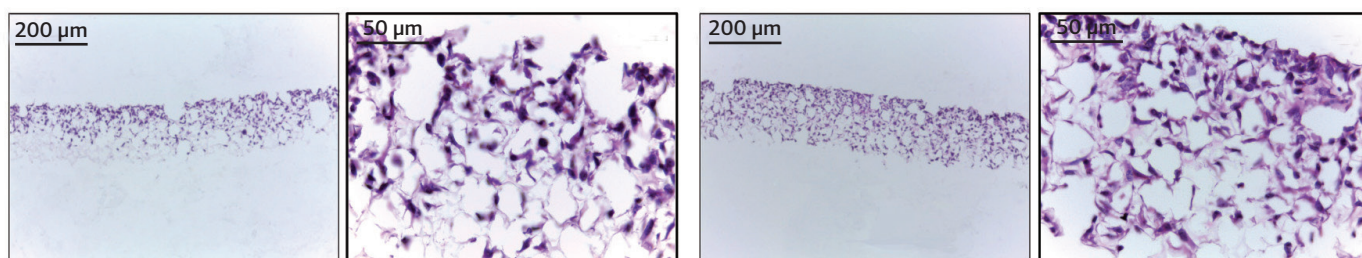


FIGURE 1. Brightfield micrographs at low (10x) and high (40x) magnification showing HepG2 cells cultured for up to 7 days on 22 mm diameter Alvetex Scaffold discs presented in 6-well insert (AVP004-3) in well insert holders in 6-well plate format. Cells were fixed, sectioned and counterstained with haematoxylin and eosin.



Matrigel® Coating of Alvetex® Scaffold

Technical Support

To obtain the latest technical support information, please visit www.reinnervate.com. You can have 24-hour access to the following information:

- Access to telephone and fax information for order support
- Search through the Reinnervate protocol video gallery
- Search product spec sheets, protocols, applications notes and product support docs
- Obtain information on customer training and workshops
- Submit a question directly to Technical Support at tech.support@reinnervate.com

Ordering Information

For the latest products and services available through Reinnervate, please visit www.reinnervate.com.

Reinnervate

NETPark Incubator, Thomas Wright Way,
Sedgefield, Co. Durham, TS21 3FD
UNITED KINGDOM

T: +44 (0) 1740 625 266

F: +44 (0) 1740 625 251

E: info@reinnervate.com

Trademarks

Matrigel is a trademark of Corning Life Sciences Inc.

Unless otherwise noted, all trademarks are the property of Reinnervate Ltd.

©2015 Reinnervate Ltd. All rights reserved.