



## Example Protocol for the Culture of the SW480 Cell Line on Alvetex® Scaffold in Well Insert and Well Plate Formats

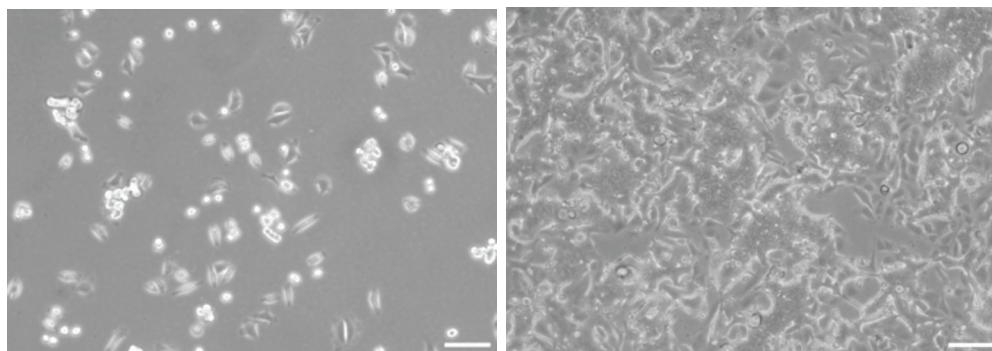
### Introduction

Alvetex Scaffold is currently available in four different cell culture formats: 24-well plate (AVP006), 12-well plate (AVP002), 6-well insert (AVP004), and 12-well insert (AVP005). 24-well and 12-well plates are suitable for shorter term cultures and for applications where limited cell penetration into the scaffold is required. Well insert formats generally support longer term cultures and deeper cell penetration into the scaffold. They also provide for conveniently tailored media set ups (see Quick Start Protocol). 6-well inserts can be placed in conventional 6-well plates, while 12-well inserts can be placed in either 6-well plates or 12-well plates, depending on media requirements. Alternatively, both insert types can be housed in the dedicated Well Insert Holder in Deep Well Petri Dish (AVP015) to allow for increased media volumes and prolonged cell culture. The availability of two different Alvetex Scaffold sizes enables choice on the basis of desired culture size and cell expenditure.

### Methods

#### Preparation for 3D Cell Culture on Alvetex Scaffold

1. SW480 cells were routinely maintained in T-75 flasks.



**FIGURE 1.** Phase contrast micrograph of SW480 cells grown in conventional 2D culture plates. Image shows cells at low (left) and high (right) confluency. Scale bars: 100  $\mu$ m.

2. Complete growth media consisted of: DMEM High glucose supplemented with 10 % v/v heat inactivated FBS, 2  $\mu$ mL-glutamine and 100 U/ml Penicillin/Streptomycin.
3. Cells were harvested by trypsinisation and centrifuged for 5 minutes (1000 rpm). The supernatant was discarded and the cell pellet was re-suspended in an appropriate volume of media for cell counting by Trypan Blue.
4. Cells were re-suspended at a concentration of  $1.0 \times 10^7$  cells/ml for seeding.
5. Follow one of the below methods according to your choice of Alvetex Scaffold format.



## Example Protocol for the Culture of the SW480 Cell Line on Alvetex® Scaffold in Well Insert and Well Plate Formats

### 24-well Plate Format, AVP006

1. Alvetex Scaffold 24-well plates were prepared for seeding with a 70 % ethanol wash (2 ml per well) and subsequent media washes (twice with 2 ml of media each).
2. 50 µl of the cell suspension was added to the centre of the Alvetex Scaffold disc, which was equivalent to  $0.5 \times 10^6$  cells per well.
3. The plate was incubated for at least 1 hour at 37 °C with 5 % CO<sub>2</sub> to allow the cells to settle into the scaffold.
4. 2 ml of media was added to each well taking care not to dislodge cells from Alvetex Scaffold.
5. Plates were re-incubated and maintained by complete media exchange after every 1-2 days.

**Note:** This method can be applied to the use of Alvetex Scaffold in 12-well plate format, AVP002. Adjust cell seeding and media volumes according to the guidelines provided in the Quick Start Protocol.

### 12-well Insert Format, AVP005

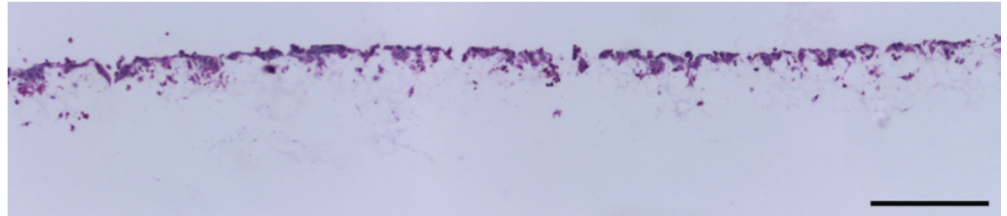
1. Alvetex Scaffold 12-well inserts in 12-well plate format were prepared for seeding by dipping in 70 % ethanol followed by media washes (twice with 4 ml per well).
2. Wells were filled from the outside of the insert with enough medium to allow it to rise inside the insert and cover the substrate, but not to go over the sides of the inserts, i.e.  $2.4 \text{ ml} \pm 0.2 \text{ ml}$ , as described for feeding above and below separately in the Quick Start Protocol.
3. 50 µl of the cell suspension was added in droplets over the surface of the Alvetex Scaffold disc, which was equivalent to  $0.5 \times 10^6$  cells per well.
4. The plate was incubated overnight at 37 °C with 5 % CO<sub>2</sub> to allow the cells to settle into the scaffold.
5. Media was added to each well to a total volume of 4ml the following morning taking care not to dislodge cells from Alvetex Scaffold.
6. Plates were re-incubated and maintained by complete media exchange after every 2-3 days.

**Note:** This method can be applied to the use of Alvetex Scaffold in 12-well plate format, AVP004. Adjust cell seeding and media volumes according to the guidelines provided in the Quick Start Protocol.

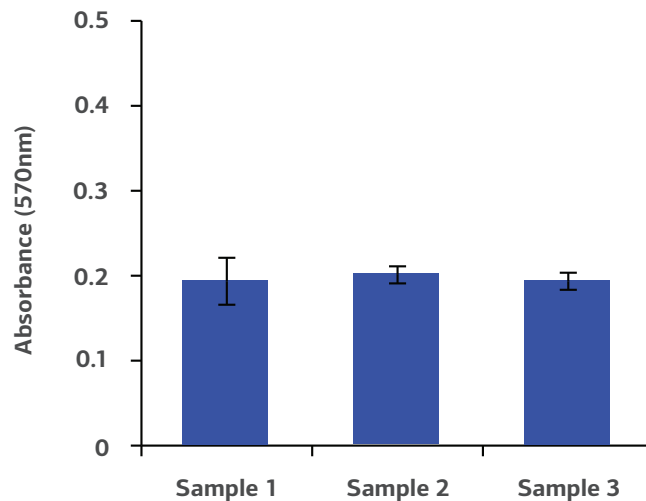


## Example Protocol for the Culture of the SW480 Cell Line on Alvetex® Scaffold in Well Insert and Well Plate Formats

### Example Data: 24-well plate format, AVP006



**FIGURE 2.** Brightfield micrographs showing the structure of SW480 cells cultured for 7 days on 15 mm diameter Alvetex Scaffold discs presented in the 24-well plate format. Cells were fixed, embedded in paraffin wax, sectioned (10  $\mu$ m) and counterstained with haematoxylin and eosin.

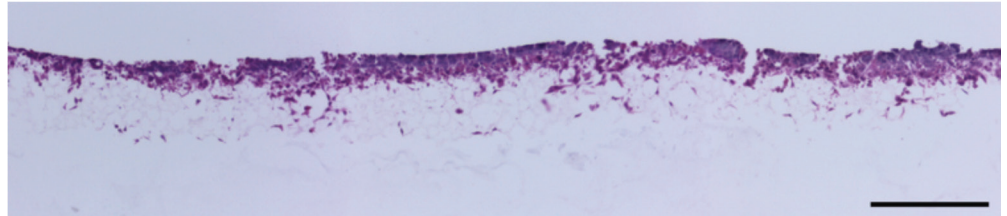


**FIGURE 3.** Biochemical analysis of cell viability using a standard MTT assay. Data from 3 sample replicates of SW480 cells are shown (n=3, mean  $\pm$  SD). Cells were cultured for 3 days on 15 mm Alvetex Scaffold discs presented in the 24-well plate format.

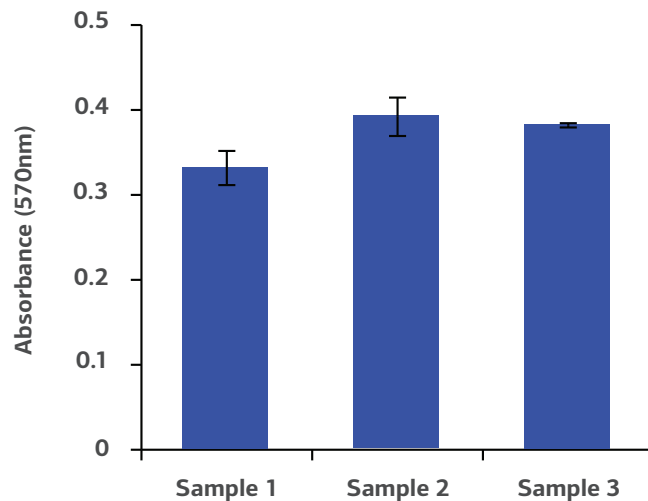


## Example Protocol for the Culture of the SW480 Cell Line on Alvetex® Scaffold in Well Insert and Well Plate Formats

### Example Data: 12-well insert format, AVP005



**FIGURE 4.** Brightfield micrographs showing the structure of SW480 cells cultured for 7 days on 15 mm diameter Alvetex Scaffold discs presented in 12-well insert in 12-well plate format. Cells were fixed, embedded in paraffin wax, sectioned (10  $\mu$ m) and counterstained with haematoxylin and eosin.



**FIGURE 5.** Biochemical analysis of cell viability using a standard MTT assay. Data from 3 sample replicates of SW480 cells are shown (n=3, mean  $\pm$  SD). Cells were cultured for 3 days on 15 mm Alvetex Scaffold discs presented in 12-well insert in 12-well plate format.



## Example Protocol for the Culture of the SW480 Cell Line on Alvetex® Scaffold in Well Insert and Well Plate Formats

### Technical Support

To obtain the latest technical support information, please visit [www.reinnervate.com](http://www.reinnervate.com). You can have 24-hour access to the following information:

- Access to telephone and fax information for order support
  - Search through the Reinnervate protocol video gallery
  - Search product spec sheets, protocols, applications notes and product support docs
  - Obtain information on customer training and workshops
  - Submit a question directly to Technical Support at [tech.support@reinnervate.com](mailto:tech.support@reinnervate.com)
- 

### Ordering Information

For the latest products and services available through Reinnervate, please visit [www.reinnervate.com](http://www.reinnervate.com).

#### Reinnervate

NETPark Incubator, Thomas Wright Way,  
Sedgefield, Co. Durham, TS21 3FD  
UNITED KINGDOM

T: +44 (0) 1740 625 266

F: +44 (0) 1740 625 251

E: [info@reinnervate.com](mailto:info@reinnervate.com)

---

### Trademarks

Unless otherwise noted, all trademarks are the property of Reinnervate Ltd.  
©2015 Reinnervate Ltd. All rights reserved.