

Data sheet: Repro Stem

Cat#: RCHEMD005, Lot: R5M140716

For Research Use Only

MFG date 16, Jul, 2014

Expiry date Jul, 2017 *Guaranteed when stored at -20 deg.C. (Date by use)

► Properties and biological tests

Appearance	Transparent orange liquid
Aseptic test ⁽¹⁾	Negative (day 14)
Mycoplasma ⁽²⁾	Negative
pH ⁽³⁾	7.30
Endotoxin	0.007 EU/mL
Osmotic pressure ⁽⁴⁾	315 mOsm/kg

(1) Cultured using thioglycolic acid medium for aseptic test and SCD medium.

(2) Tested by PCR for the detection of mycoplasma.

(3) Measured after 12 h incubation under conditions of 37°C and 5% CO₂.

(4) Measured using the freezing point depression method.

► Culture test performed using human iPS cells

Methods

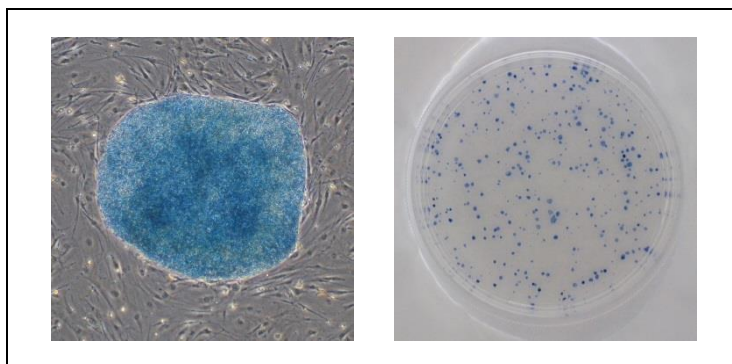
Human iPS cells (201B7; Takahashi, K. et al., *Cell*, 131, 861-72, 2007) were cultured in the ReproStem with MEF feeder cells for 4 days.

After 3 passages, the cell morphology were observed.

Alkaline phosphatase activity was ascertained using the ALP substrate kit III (vector).

Results

Alkaline phosphatase activity: Qualified



ReproCELL Inc.

<https://www.reprocell.com>

E-mail:

➤ Japanese (日本語): info_jp@reprocell.com

➤ English (英語): info_en@reprocell.com