

Data sheet: Repro Stem

Cat#: RCHEMD005, Lot: R5M131121

For Research Use Only

MFG date 21, Nov, 2013

Expiry date Nov, 2016 *Guaranteed when stored at -20 deg.C. (Date by use)

► Properties and biological tests

| | |
|---------------------------------|---------------------------|
| Appearance | Transparent orange liquid |
| Aseptic test ⁽¹⁾ | Negative (day 14) |
| Mycoplasma ⁽²⁾ | Negative |
| pH ⁽³⁾ | 7.30 |
| Endotoxin | 0.009 EU/mL |
| Osmotic pressure ⁽⁴⁾ | 313 mOsm/kg |

(1) Cultured using thioglycolic acid medium for aseptic test and SCD medium

(2) Tested by PCR for the detection of mycoplasma.

(3) Measured after 12 h incubation under conditions of 37°C and 5% CO₂

(4) Measured using the freezing point depression method

► Culture test performed using human iPS cells

Methods

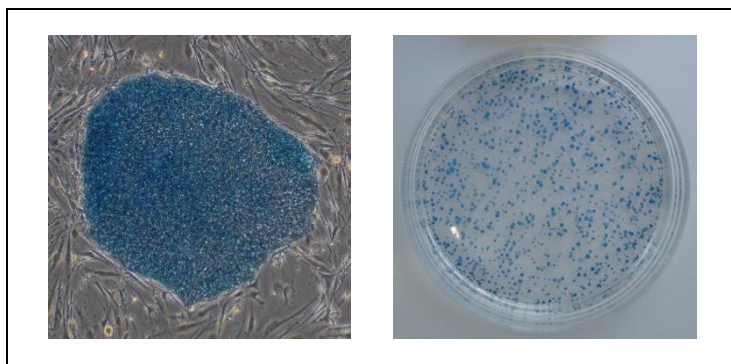
Human iPS cells (201B7; Takahashi, K. et al., *Cell*, 131, 861-72, 2007) were cultured in the ReproStem with MEF feeder cells for 4 days.

After 3 passages, the cell morphology were observed.

Alkaline phosphatase activity was ascertained using the ALP substrate kit III (vector).

Results

Alkaline phosphatase activity: Qualified



ReproCELL Inc.

<http://www.reprocell.com>

E-mail:

➤ Japanese (日本語): info_jp@reprocell.com

➤ English (英語): info_en@reprocell.com