

Cat#: RCHEMD005, Lot: R5M120830

For Research Use Only

► Properties and biological tests

Appearance	Transparent orange liquid
Aseptic test ⁽¹⁾	Negative (day 14)
Mycoplasma ⁽²⁾	Negative
pH ⁽³⁾	7.30
Endotoxin	0.004 EU/mL
Osmotic pressure ⁽⁴⁾	314 mOsm/kg

(1) Cultured using thioglycolic acid medium for aseptic test and SCD medium

(2) Cultured using Myco Trim TC

(3) Measured after 12 h incubation under conditions of 37°C and 5% CO₂

(4) Measured using the freezing point depression method

► Culture test performed using human iPS cells

Methods

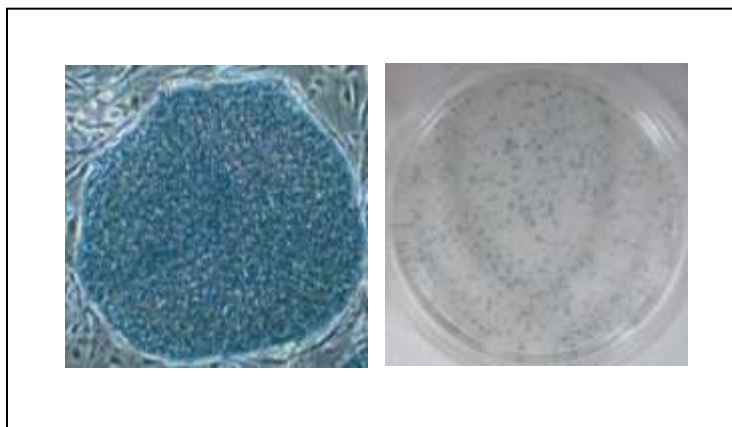
Human iPS cells (201B7; Takahashi, K. et al., *Cell*, 131, 861-72, 2007) were cultured in the Repro Stem with MEF feeder cells for 9 days.

Subsequently, the cell growth and morphology were observed and compared with those of the control.

Alkaline phosphatase activity was ascertained using the ALP substrate kit III (vector).

Results

Alkaline phosphatase activity: Qualified



ReproCELL Inc.

<http://www.reprocell.com>

E-mail:

➤ Japanese (日本語): info_jp@reprocell.com

➤ English (英語): info_jp@reprocell.com